



BARTLEY & ASSOCIATES
REALTY ADVISORS

FOR LEASE

BAYVIEW CENTRE

11300 N. 4th St. | St. Petersburg, FL 33716



PROPERTY OVERVIEW

- Three story, Class A office building containing 72,500 rentable square feet
- Close proximity to restaurants, banks, and hotel accommodations
- Highly efficient floor plans
- High quality lobby burnished with sable wood panels and granite
- Heavily landscaped grounds
- 4/1000 parking ratio
- Monument signage available

LOCATION

- Located in the heart of the Gateway area in mid-Pinellas County with immediate access to I-275 via Roosevelt Ave. and 4th St.
- Less than ten minutes to Tampa and renown Tampa International Airport

RATE

- Aggressive rental rates starting at \$17.25 per RSF
- Generous Tenant Improvement Allowance

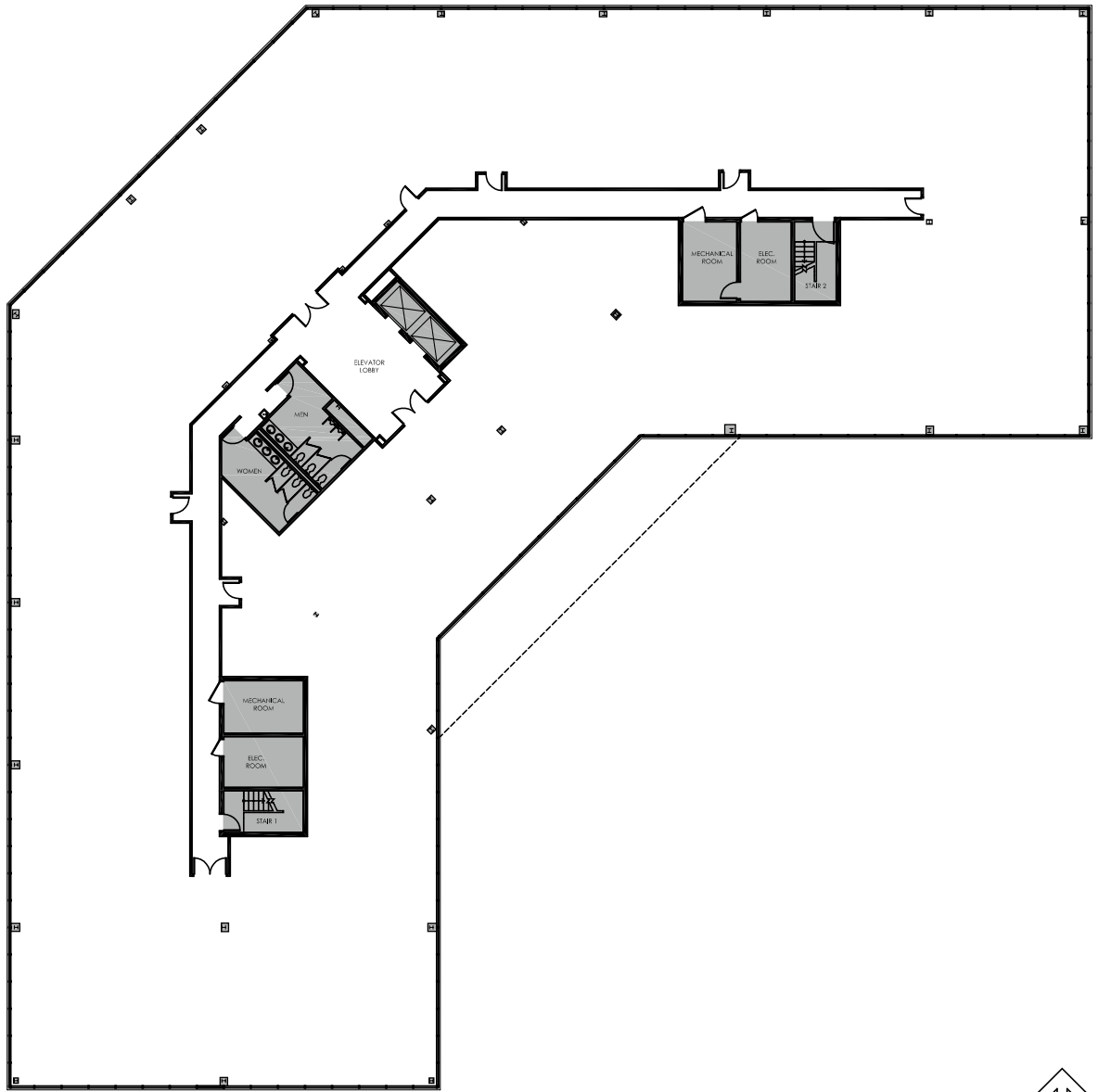
Doug Bartley | 813-299-2419

402 Knights Run Ave. | Suite 100 | Tampa, FL 33602

www.bartleyandassociates.com

FLOOR PLAN

TYPICAL FLOOR PLAN



BARTLEY & ASSOCIATES
REALTY ADVISORS

LICENSED REAL ESTATE BROKER

Doug Bartley | 813-299-2419

402 Knights Run Ave. | Suite 100 | Tampa, FL 33602

www.bartleyandassociates.com

Although all information furnished regarding for sale, rental or financing is from sources we deem reliable, such information has not been verified and no express representation is made nor is any to be implied as to the accuracy thereof, and it is submitted subject to errors, omissions, changes of price, rental or other conditions, prior sale, lease or financing, or withdrawal without notice.